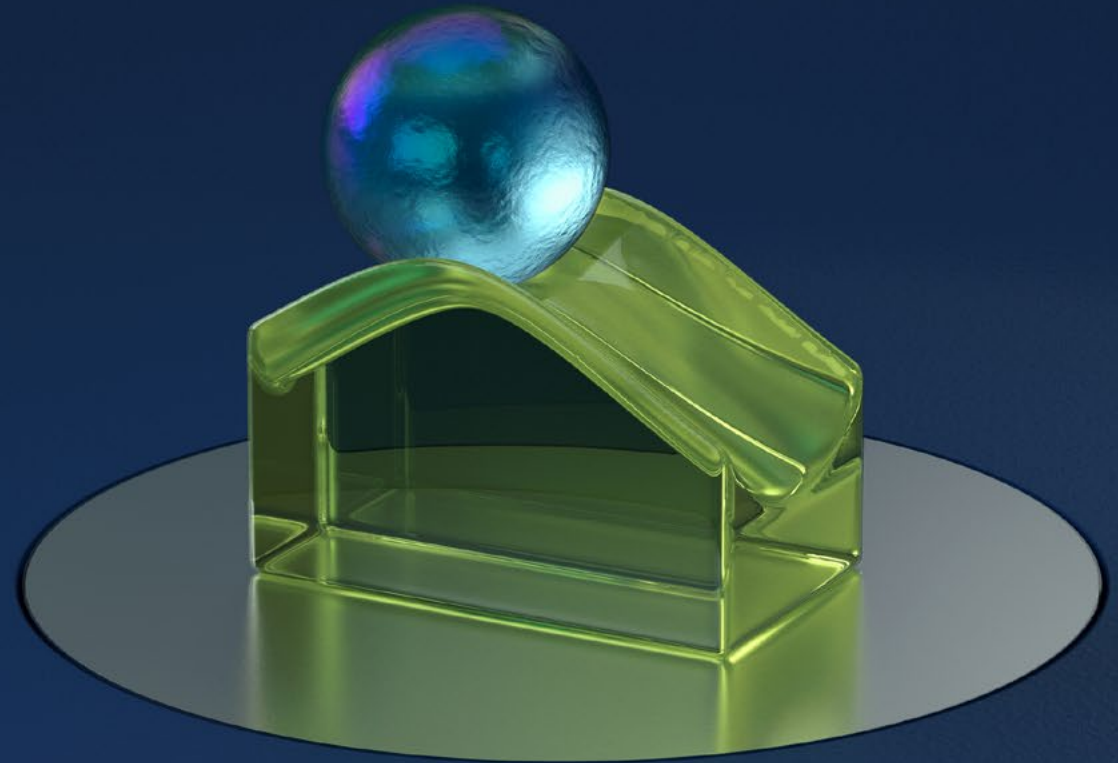




**TRUMPF Software**

# Oseon. Work flows

Produce fluidly with the role-based software for the  
sheet metal process chain



# With Oseon your work simply flows

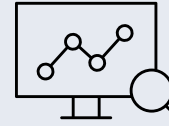
As a sheet metal processor, you strive for transparency, reliable delivery, and machine availability. Hence you need more efficient processes that mesh optimally.

## How do you steer your production more efficiently and with maximum flexibility?

With Oseon you connect production processes, machines, and employees together. The software combines MES and WMS functionalities, perfectly matched to the sheet metal process chain. It also offers easy integration of existing systems such as ERP and CAM.

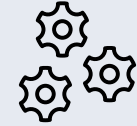
From Go, Grow or Flow you may select the ideal Oseon solution packet for your needs and expand as your business grows.

### Enhanced productivity



#### Digital order management

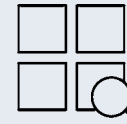
Flexible entry control  
and tracking of jobs



#### Efficient tool and machine set-up

Easy calibration of machines  
and operating equipment

### Reduced search times



#### Complete traceability

Control of the material flow  
incl. the buffer stock

### Lower stock levels



#### Seamless stock management

Simple and automated  
stock entry

### Higher throughput



#### Optimized order flow

Transparent availability  
of the workplaces



#### Just-in-time Intralogistic

Optimally guided  
intralogistic

### Reduced down-time



#### Optimal workplace control

Mobile worker  
assistance

### Perpetual process optimization



#### Efficient analysis

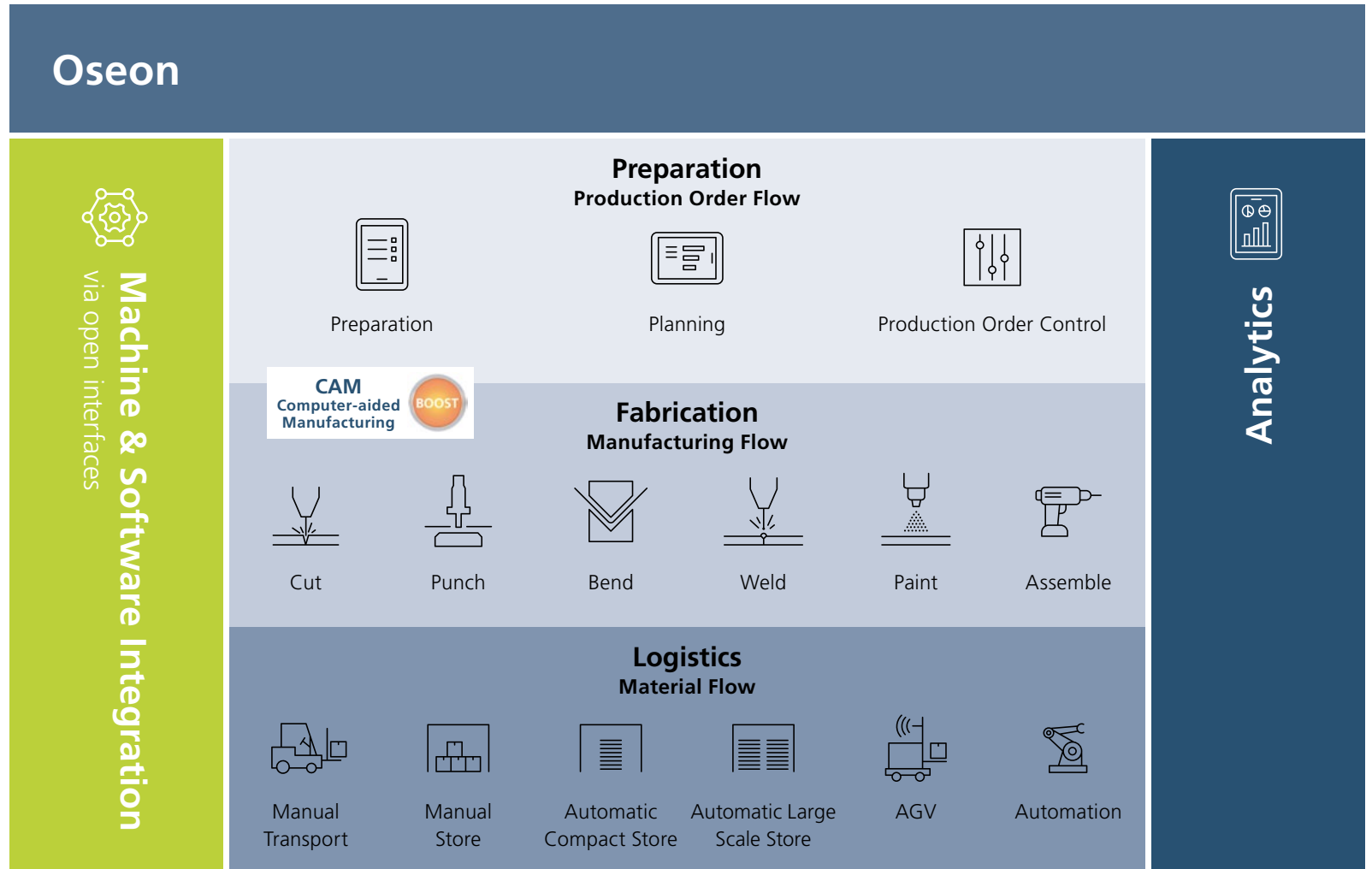
Secure data-base due to  
automatic feedback

# Oseon's structure

Information comes from many places in your production. Oseon software makes sure, that user-specific and relevant information is received just at the right point in time, and in the right place.

To do so, Oseon combines functionalities of MES and WMS systems and analytics, and also has open interfaces so if required you can easily connect other 3rd party machines and software systems such as CAM and ERP. This is how the software closes media gaps and supports your team throughout the entire sheet metal process chain.

The result is a seamless information flow from order entry right through to delivery of the finished parts. Simply: Work flows.



**Whether Oseon Go, Grow or Flow, the flexibly structured approach, means you can select the right solution for you, irrespective of where you stand right now. You can grow step-by-step and digitalize and automate your production processes, in such a way that makes sense for you.**

- **Oseon Go** digitalizes all the core processes in your production and strengthens the central processes of your sheet metal production. With intelligent functions, Oseon helps you to improve the efficiency of both your employees and machines. **The motto: Ready, steady, go.**
- **Oseon Grow** integrates additional components as well as interfaces and thus facilitates the interplay between the order and material flow at the factory level. The software synchronizes orders, transport, storage and inventory data. **The motto: Higher, further, faster.**
- **Oseon Flow** automates the workflow in networked sheet metal production: intelligent logistics systems ensure that the work steps flow seamlessly into each other.  
**The motto: Energy flows where focus goes.**

**Upgrade opportunities for existing TruTops Fab customers:**

Take advantage of the new functionalities through a one-time upgrade.

[www.trumpf.com/s/oseon](http://www.trumpf.com/s/oseon)



**TRUMPF**



TRUMPF Werkzeugmaschinen SE + Co. KG

Johann-Maus-Strasse 2 · 71254 Ditzingen · Phone +49(0)7156 303-30862 · Fax +49(0)7156 303-930862

E-mail [info@trumpf.com](mailto:info@trumpf.com) · Homepage [www.trumpf.com](http://www.trumpf.com)